



THINK ON ANOTHER LEVEL

TERRAIN

THE EXPERTS IN TALL BUILDINGS

Polypipe is the UK's largest plastic  
piping systems manufacturer





With over **20,000** product lines



A substantial fleet of over **400** vehicles



Employing well over **3,000** people





# Terrain - The experts in tall buildings

THINK ON ANOTHER LEVEL

- We are experts at dealing with the added complexities of building big, such as the need to manage large volumes of water.
- We can provide comprehensive solutions, with technical support and expertise from the initial design stage through to installation
- Our dedicated product and service offerings includes...

THINK ON ANOTHER LEVEL





Terrain Firetrap



Terrain FUZE HDPE



Terrain PVC



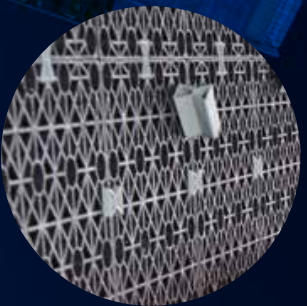
Terrain Acoustic dB12



Underfloor Heating



Terrain P.A.P.A. & Pleura



Permavoid



Siphonics Rainwater



Rainstream



Terrain Fabrication Service

DOWN ANOTHER LEVEL

# Terrain Firetrap

---

A selection of sleeves and collars which are usable with any Polypipe Terrain soil and waste system and offer **up to 4 hours of fire protection**

## **Key benefits:**

- Provide compartmentalisation for plastic drainage systems when penetrating fire compartments
- Allow for compliance with approved document Part B Building Regulations – Resistance to the passage of fire within dwellings
- Have been tested on several different floor and wall types





## Terrain FUZE HDPE

Manufactured from high density polyethylene. Its impact strength makes it almost unbreakable

### **Key benefits:**

- Highly resistant to impact even at low temperatures
- Highly resistant to chemical agents
- Leak free homogenous welded joints



# Terrain PVC

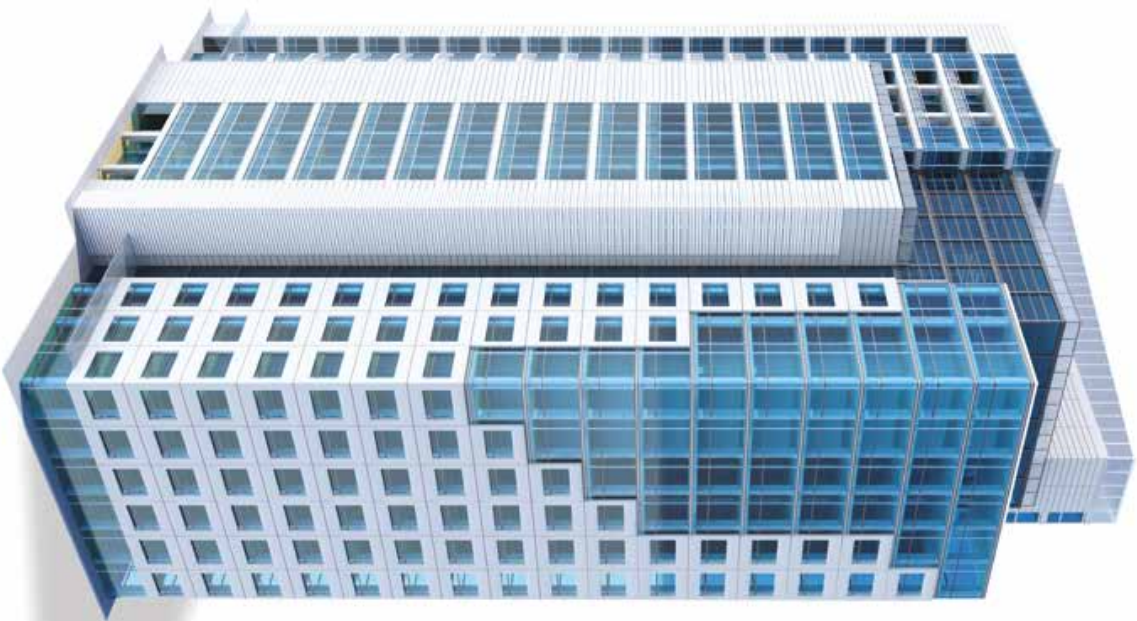
---

Terrain Soil and Waste is a comprehensive range of solvent-weld and push-fit PVC drainage solutions

**Key benefits:**

- Unrivalled installation options to match any project
- Quick and easy installation
- Light in weight and easy to handle





# Acoustic Solutions

---

Acoustic management is a key issue in multi-occupancy buildings

# Acoustic Underfloor Heating

---

Our range of systems can provide the right solution for even the biggest buildings

## Key benefits:

- Energy efficiency, through working at much lower temperatures than radiator-based systems
- Evenly distributed heat, with no cold spots and fewer draughts
- Design freedom – having no radiators frees up walls





## Terrain Acoustic dB12 drainage system

---

Acoustic dB12 provides a simple method to reduce sound emissions from soil and waste systems

### **Key benefits:**

- Elevated mechanical and corrosion resistance
- Highly resistant to impact, even at low temperatures
- Working temperatures from 0°C to 95°C

# Terrain Positive Air Pressure Attenuator (P.A.P.A.)

Avoiding the need for a secondary ventilation stack in larger buildings can maximise commercial space

## Key benefits:

- Removes the need for a secondary vent pipe system
- Installation, materials and labour costs will be reduced
- Perfect for use in tall buildings or buildings with complicated drainage systems





## Terrain Pleura

---

Quickly responds to any negative pressure, allowing air to enter the system at the point of need

### Key benefits:

- Provides ventilation to branch pipework
- Closes by gravity and prevents foul air leaving the drainage system
- Prevents trapped water seals being drawn

# Permavoid

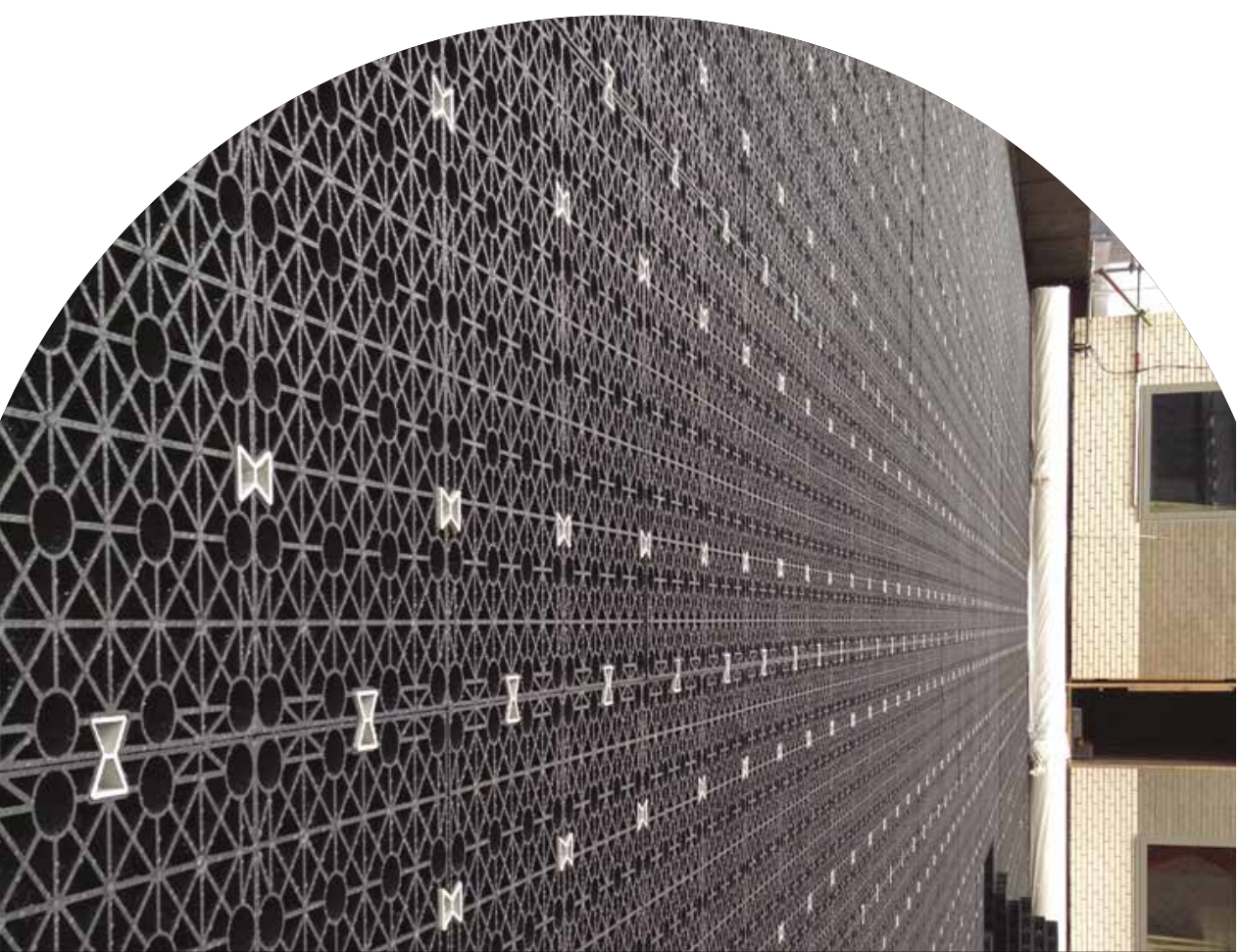
---

Our geocellular system has been created to manage surface water at the source

It mitigates the need for water storage tanks, making it the perfect solution where space is limited and commercial space is at a premium

## Key benefits:

- Designed and tested for retention, attenuation or infiltration at shallower depths
- Can be installed above a high water table
- Applications include blue roofs, green roofs and podium decks





# Siphonics Rainwater Systems

---

This advanced Siphonic drainage system provides rapid and highly efficient removal of water from large roof areas

**Key benefits:**

- Pipes require no fall or slope, increasing design flexibility
- Self-cleaning system
- Fully complies to BS 8490:2007



# Rainstream

---

Polypipe Rainstream offers a range of highly-effective solutions for the storage, filtration and re-use of rainwater in commercial applications.

## Key benefits:

- Various tank sizes available for commercial applications from 1,500 to 300,000 litres
- Integral leaf filter within storage tank for below ground applications
- Complete range of additional items such as duty standby and booster systems





## Surestop

---

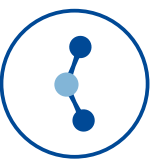
As the only alternative to the brass stopcock, Surestop allows mains water supply to be turned off with the flick of a switch.

### Key benefits:

- WRAS approved to 10 Bar
- Available in sizes 15mm and 22mm
- Lockdown Button mechanism

# Terrain Fabrication Service

Our Fabrication Service has the expertise and resources required to produce fabricated drainage stacks and bespoke fittings to exact requirements



#### **SIMPLE ON-SITE CONNECTIONS**

Straight forward installation saves on labour costs



#### **PRE-AIR TESTING AVAILABLE**

Removes the time and skills required for on-site testing



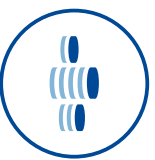
#### **REDUCES ON-SITE INSTALLATION TIME**

Installation is simple and quicker than assembling loose fittings



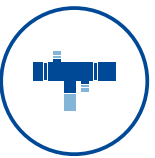
#### **TERRAIN HAS OVER 40 YEARS EXPERIENCE OF FABRICATING**

You can expect quality from a brand you can trust



#### **REDUCES ON-SITE LABOUR COSTS**

Reduced installation time keeps overall project costs down



#### **WIDEST PORTFOLIO OF BESPOKE SOLUTIONS**

Providing customised solutions for tricky one-off projects



#### **REDUCE ON-SITE WASTE**

Made to measure, engineered solutions means there is a reduction in wasted materials



#### **BES 6001 ACCREDITATION**

Our material has been responsibly sourced with full traceability throughout supply chain



THINK ON ANOTHER LEVEL

# THE EXPERTS IN TALL BUILDINGS

**TERRAIN**

For more information, visit

[www.polypipe.com/tallbuildings](http://www.polypipe.com/tallbuildings)